

**MINUTES OF THE CONSTRUCTION & DEVELOPMENT  
COMMITTEE MEETING OF THE  
CONVENTION CENTER AUTHORITY OF THE  
METROPOLITAN GOVERNMENT OF NASHVILLE &  
DAVIDSON COUNTY**

The Construction & Development Committee of the Convention Center Authority of the Metropolitan Government of Nashville and Davidson County (CCA) met on April 21, 2011 at 8:02 a.m., in Room 211 at the Nashville Convention Center, Nashville, Tennessee.

**CONSTRUCTION & DEVELOPMENT COMMITTEE MEMBERS PRESENT:** Luke Simons, Mona Lisa Warren, and Leo Waters

**CONSTRUCTION & DEVELOPMENT COMMITTEE MEMBERS NOT PRESENT:**  
Vonda McDaniel

**OTHERS PRESENT:** Larry Atema, Mark Sturtevant, Charles Robert Bone, Kristen Heggie, Gary Schalmo, Roxianne Bethune, Terry Clements, Holly McCall, Patrick Holcombe, Peter Heidenreich, Jasmine Quattlebaum, Barbara Solari, and Susan McDonald.

The meeting was opened for business by committee Chairman Leo Waters.

**ACTION:** Luke Simons made a motion to approve the Construction & Development Committee minutes of March 24, 2011. The motion was seconded by Mona Lisa Warren and approved unanimously by the committee.

Gary Schalmo shared information about the Building Information Modeling and gave a construction update. (Attachment #1) There was discussion and questions.

Kristen Heggie gave an infrastructure update. (Attachment #2) There were questions and discussion.

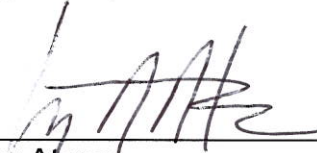
Patrick Holcombe talked about the conformance set. Charles Robert Bone discussed having design plans approved at the next CCA meeting and authorizing Larry Atema and Mark Sturtevant to make decisions within that design.

**ACTION:** Luke Simons made a motion to recommend a presentation to the full Authority on the updated architectural design of the Music City Center and assuming that is satisfactory to the full Authority that it be approved. The motion was seconded by Mona Lisa Warren and approved unanimously by the committee.

There were additional questions and discussion regarding the Music City Center procurement and Patrick Holcombe gave an overview. (Attachment #3)

With no additional business a motion was made to adjourn, with no objection the Construction & Development committee of the CCA adjourned at 9:05 a.m.

Respectfully submitted,



---

Larry Atema  
Senior Project Manager  
Music City Center

Approved:



---

Leo Waters, Committee Chair  
CCA Construction & Development Committee  
Meeting Minutes of April 21, 2011

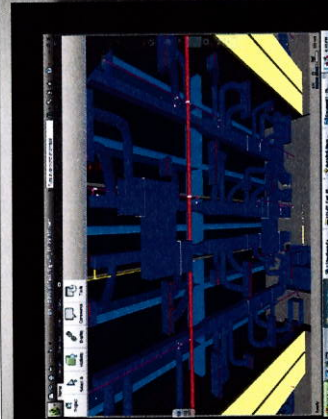
## Music City Center BIM

Building Information Modeling  
Bell/Clark



## MEP Coordination

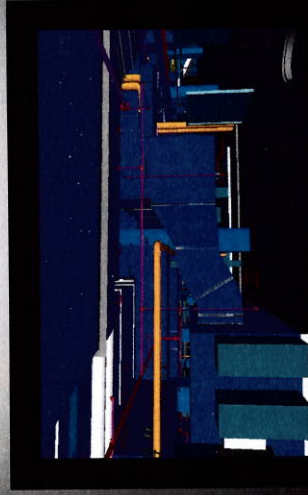
- Began September 2010
- Currently have Levels 1-4 and the Exhibit Hall Signed Off
- Identifying issues prior to becoming an issue in the field
- Weekly coordination meetings via Webex with members of the design team
- Over 20 full time MEP modelers for this project
- Clash detection using Navisworks



LEVEL ONE MEETING ROOMS



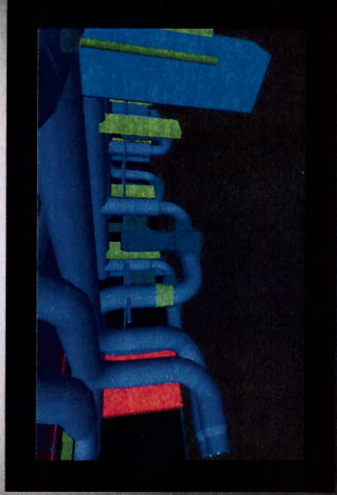
LEVEL ONE MEETING ROOMS



LEVEL ONE NORTH



LEVEL ONE NORTH



CHILLED WATER PUMPS AND PIPING



CHILLED WATER PUMPS AND PIPING

SKIN MODELING



## **Music City Center Infrastructure Related Lane/Road Closures**

### **Demonbreun/5th Avenue Intersection (DES Work shown in red)**

- Intersection closed to north bound traffic
- East/West bound traffic unaffected.
- **Reopens by April 30, 2011 for the Music City Marathon & Half Marathon**

### **Molly and Molloy/Almond Intersection (DES Work shown in red)**

- Molloy Closed (now through mid-June 2011)
- Almond/Molloy (May 2, 2011 – mid-June 2011)
- **Reopens mid-June 2011**

### **Franklin St. and intersection of Franklin/5th Avenue (Storm Line Relocation for Omni Excavation shown in pink)**

- Franklin St. between 4th and 5th Closed (May 2, 2011 – May 31, 2011)
- Intersection of Franklin St./5th Avenue South Closed (May 2, 2011 – May 31, 2011)
  - Due to the work in the intersection, 5th Avenue will be closed to all south bound traffic beginning at Peabody St.
- **5th Avenue and Franklin St. reopen June 1, 2011**

### **5th Avenue between Franklin and Hog Alley (NES Yellow Repair shown in yellow)**

- 5th Avenue between Hog Alley and Franklin St. Closed (May 2, 2011 – May 31, 2011)

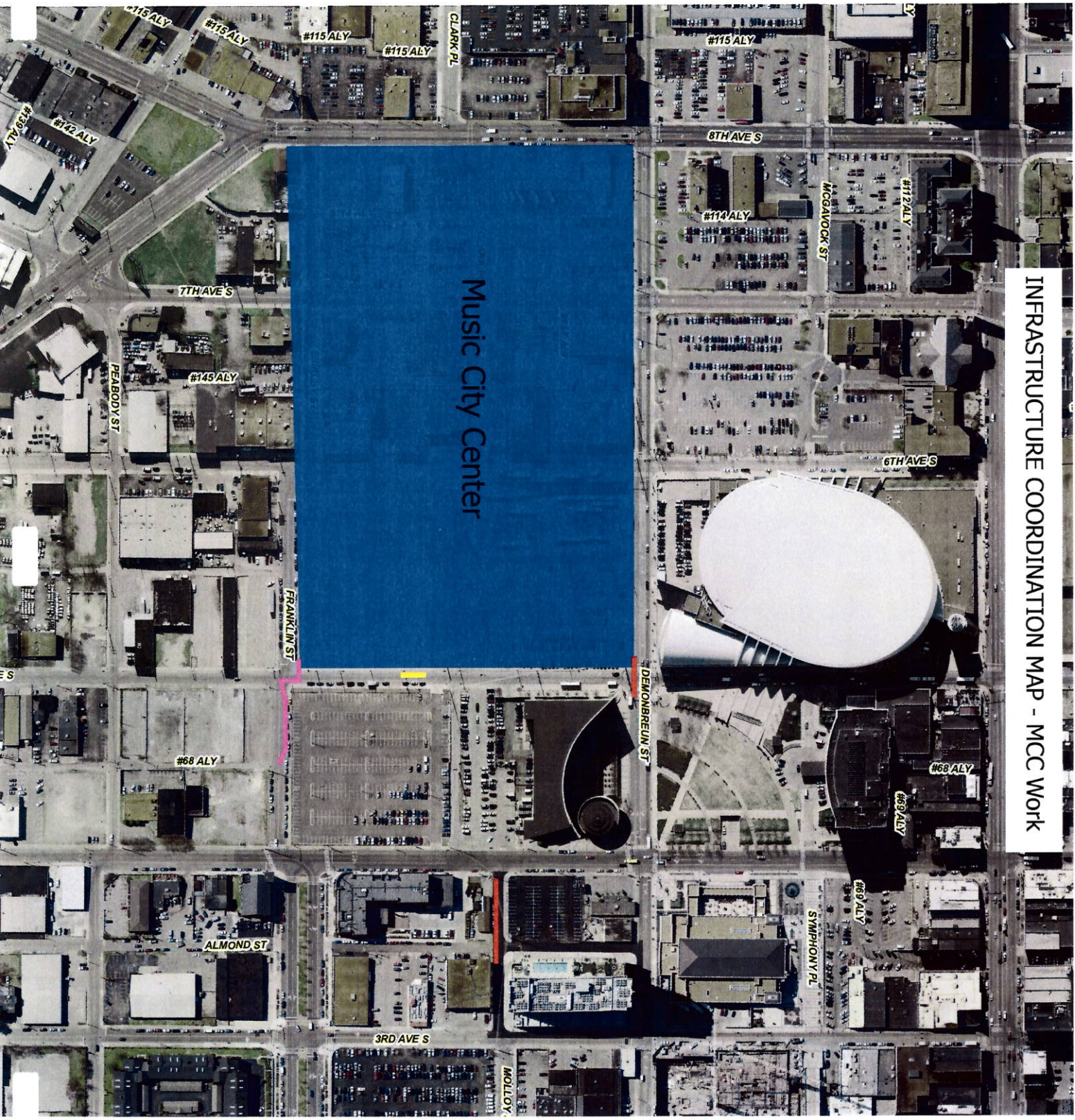
\*\*Work will be done simultaneously with the Franklin and Franklin/5th Avenue storm line relocation in order to reduce the duration of the closure on 5th Avenue.

- 5th Avenue will reopen to north bound traffic by June 1, 2011

**Due to the Storm Line Relocation and the NES Yellow Repair, 5th Avenue will become a 2 way street from Demonbreun for local traffic only. ONLY Bridgestone, Country Music Hall of Fame and MCC traffic will be allowed on 5th Avenue during this time.**



INFRASTRUCTURE COORDINATION MAP - MCC WORK



Music City Center





### Music City Center - Bell/Clark Construction Procurement Log

Item #	Bid Package Description	Contractor/Office Location	Awarded Amount	DBE Forecasted Breakdown				Total DBE Forecast	Forecasted Local Material, Labor & Equip.
				MBE Forecast	WBE Forecast	SBE Forecast	Total DBE Forecast		
1 aa	Site Surveying	DSC - Nashville, TN	\$ 29,990.00	-	100%	-	100%	100%	
1 ab	Fencing/Barricades	LU - Nashville, TN	\$ 122,957.00	40%	-	-	40%	100%	
1 a	Utility Relocations/Temp Service	Summit Constructors - Nashville, TN	\$ 506,000.00	7%	-	16%	23%	100%	
1 b	Demo and Abatement	Bomar - Nashville, TN	\$ 267,200.00	30%	40%	30%	100%	100%	
2 a	Excavation	Mountain States Construction - Nashville, TN	\$ 5,393,000.00	-	20%	-	20%	100%	
3 a	Partial Arena Ramp	CCK Construction - Orlando, FL	\$ 2,986,698.00	5%	26%	-	31%	55%	
3 b	Structural Concrete	Ceco - St. Louis, MO	\$ 42,550,000.00	23%	-	-	23%	84%	
4 a	Masonry	Allan Spear Construction - Gainesville, FL	\$ 4,985,000.00	25%	-	10%	35%	75%	
4 b	Stone	Associated Imports Corporation - Atlanta, GA	\$ 1,825,000.00	9.37%	6.19%	5.26%	20.82%	50%	
5 a	Structural Steel	Lenex Steel Company - Indianapolis, IN	\$ 39,503,000.00	8%	3%	19%	30%	50%	
5 b	Metal Stairs	MIG Construction Services - Nashville, TN	\$ 1,950,700.00	100%	-	-	100%	100%	
5 c & 5 e	Misc. Metals & Red Iron Steel	Schuff Steel Company - Albany, GA	\$ 10,150,000.00	28%	0%	0%	28.00%	25%	
5 d	Ornamental Metals	Tate Ornamental Inc. - Nashville, TN	\$ 2,080,000.00	20%	0%	0%	20.00%	100%	
7 a	Metal Panels	Kovach - Chandler, AZ	\$ 11,495,000.00	1.48%	23.80%	-	40.28%	80%	
7 b	Roofing	Team Roofing, Inc. - Charlotte, NC	\$ 7,915,000.00	-	-	32.20%	32.20%	45%	
7 c	Applied Fire-Proofing	Alpha Insulation & Waterproofing - Atlanta, GA	\$ 824,000.00	100.00%	-	-	100.00%	40%	
7 d	Waterproofing	Metro Waterproofing - Atlanta, GA	\$ 1,680,000.00	26.89%	0.00%	0.00%	26.89%	35%	
8 a	Curtainwall	Enclos Corp - Millersville, MD	\$ 19,884,259.00	17.30%	10.30%	-	27.60%	60%	
8 b	Overhead Door and Loading Dock Equipment	The Hammak Company - Nashville, TN	\$ 1,045,000.00	0.00%	0.00%	100.00%	100.00%	100%	
8 c	Doors, Frames and Hardware	Griman & Associates - Nashville, TN	\$ 1,540,000.00	-	-	4.00%	4.00%	100%	
8 d	Interior Glazing and Storefront	Alexander Metals, Inc. - Nashville, TN	\$ 1,450,000.00	-	-	100.00%	100.00%	100%	
9 a	Drywall	Roswell Drywall - Atlanta, GA	\$ 17,029,400.00	30.00%	0.00%	-	30.00%	45%	
9 b & 9 d	Flooring and Tile	Spectra Contract Flooring - Tampa, FL	\$ 4,475,000.00	20.00%	0.00%	0.00%	20.00%	40%	
9 c	Painting	Eugenio Painting - Detroit, MI	\$ 2,017,126.00	20.00%	0.00%	0.00%	20.00%	40%	
9 e	Ceilings	Acoust Engineering - Nashville, TN	\$ 11,622,500.00	-	20.00%	-	20.00%	100%	
10 a	Operable Walls	Hufcor, Inc. - Janesville, WI	\$ 3,897,136.00	0.03%	0.3%	24.73%	25%	25%	
10 b	Millwork and General Trades	ISEC, Inc. - Milwaukee, WI	\$ 5,040,000.00	7.00%	-	13.00%	20%	40%	
11 a	Window Washing Equipment	ACE Machine & Metal Fabrication - Nashville, TN	\$ 159,000.00	0.00%	0.0%	100.00%	100%	100%	
11 b	Parking Control Equipment	Amano McGann, Inc. - Nashville, TN	\$ 381,000.00	0%	0%	0%	0%	100%	
11 c	Food Service Equipment	Federal Equipment Dealers - Memphis, TN	\$ 2,124,000.00	15.0%	0%	0%	15.0%	35%	
14 a	Vertical Transportation	Nashville Machine Elevator - Nashville, TN	\$ 5,524,128.00	27%	-	-	27%	100%	
21 a	Fire Protection	Ryan Fireprotection, Inc. - Noblesville, IN	\$ 6,465,000.00	-	-	20%	20%	60%	
23 a	Mechanical and Plumbing	Foley Company - Kansas City, MO	\$ 51,906,850.00	17.6%	14.2%	0.90%	32.70%	65%	
26 a	Temp Electric	Edwards Electric - Nashville, TN	\$ 560,000.00	15%	44%	41%	100%	100%	
26 b	Electrical, Fire Alarm, AV, Telecom	Conti Electric - Sterling Heights, Michigan	\$ 40,950,000.00	-	30%	-	30%	66%	
33 a	Site Utilities	Mountain States Construction - Nashville, TN	\$ 1,185,700.00	-	15%	-	15%	100%	
33 c	NES Peabody Foundations	Bell and Associates Construction - Nashville, TN	\$ 3,219,329.00	0.30%	26.40%	-	26.7%	100%	
33 d	Underground Electric Duct Bank - Package #1	Stansell Electric and Summit - Nashville, TN	\$ 3,298,655.00	-	7.76%	18.85%	26.61%	100%	
33 d	Underground Electric Duct Bank - Package #2	Stansell Electric and Summit - Nashville, TN	\$ 3,544,210.00	-	16.12%	4.86%	20.97%	100%	
<b>Total Awarded to Date</b>			<b>\$ 321,581,838.00</b>	<b>\$ 42,573,237</b>	<b>\$ 32,167,339</b>	<b>\$ 19,830,129</b>	<b>\$ 94,570,706</b>	<b>\$ 212,449,425</b>	

Percent of Total Contract Awarded to Date (Less Construction Manager Cost)

**92.1%**

Total DBE Percentage of the Above Awarded Packages  
\*\* Actual Percentage Calculated at Time of Payment.

**29.4%**

Total Percent Local Awarded to Date  
\*\* Each of the above line items, when awarded, is backed by a Payment and Performed Bond(s) for the full contract amount.

**66.1%**

Outstanding Procurement Packages

Joint Sealants

Signage

Asphalt Paving

Hardscape and Landscape

Traffic Signal Vaults

General Requirements (Hoisting, Safety, Temp. Utilities, Jobsite Clean-up, Field Engineering, Job Printing, Misc. Equipment and Materials)

