



MUSIC CITY CENTER'S
FLOORPLANS



MUSIC CITY CENTER

MUSIC CITY CENTER'S
FLOORPLANS

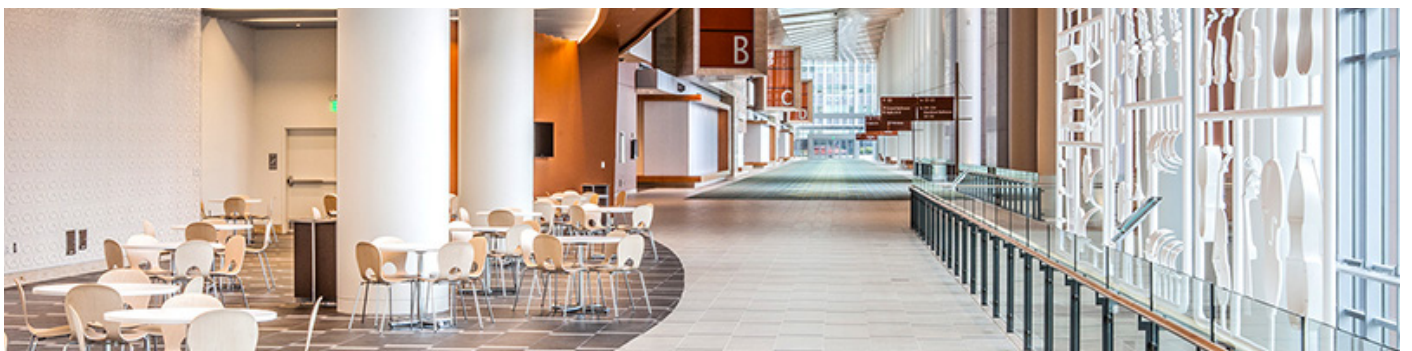
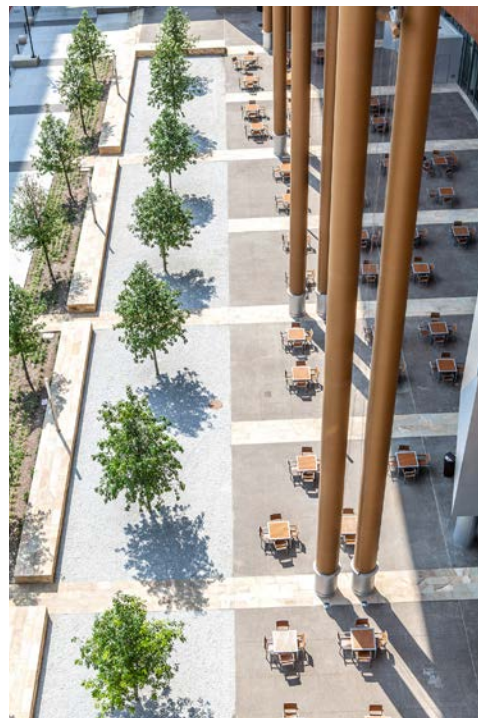
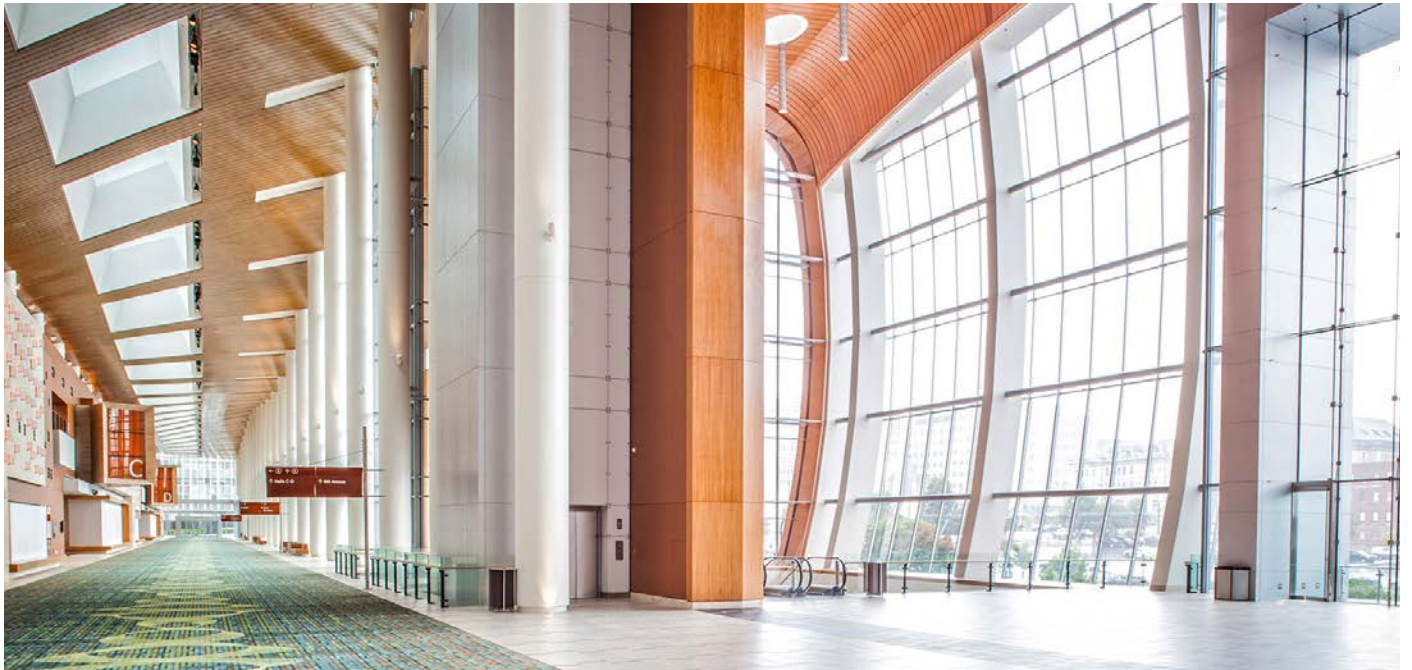


TABLE OF CONTENTS

LEVEL 1: Meeting Rooms

LEVEL 1M: Davidson Ballroom

LEVEL 2: Meeting Rooms

LEVEL 3: Exhibit Hall

LEVEL 3M: Show Manager Offices

LEVEL 4:
Karl F. Dean Grand Ballroom

Sustainability

Food & Beverage

Quick Facts

MEETING ROOMS: 60

TERRACES:

Level 1: 19,000 sq. ft.

Level 2: 16,500 sq. ft.

DAVIDSON BALLROOM:

17,900 sq. ft.

Ceiling Height 20'

EXHIBIT HALL:

353,143 sq. ft.

Subdivided into 4 halls

(Hall A subdivided into 2 parts)

32'6" Rigging Height

KARL F. DEAN

GRAND BALLROOM:

57,500 sq. ft.

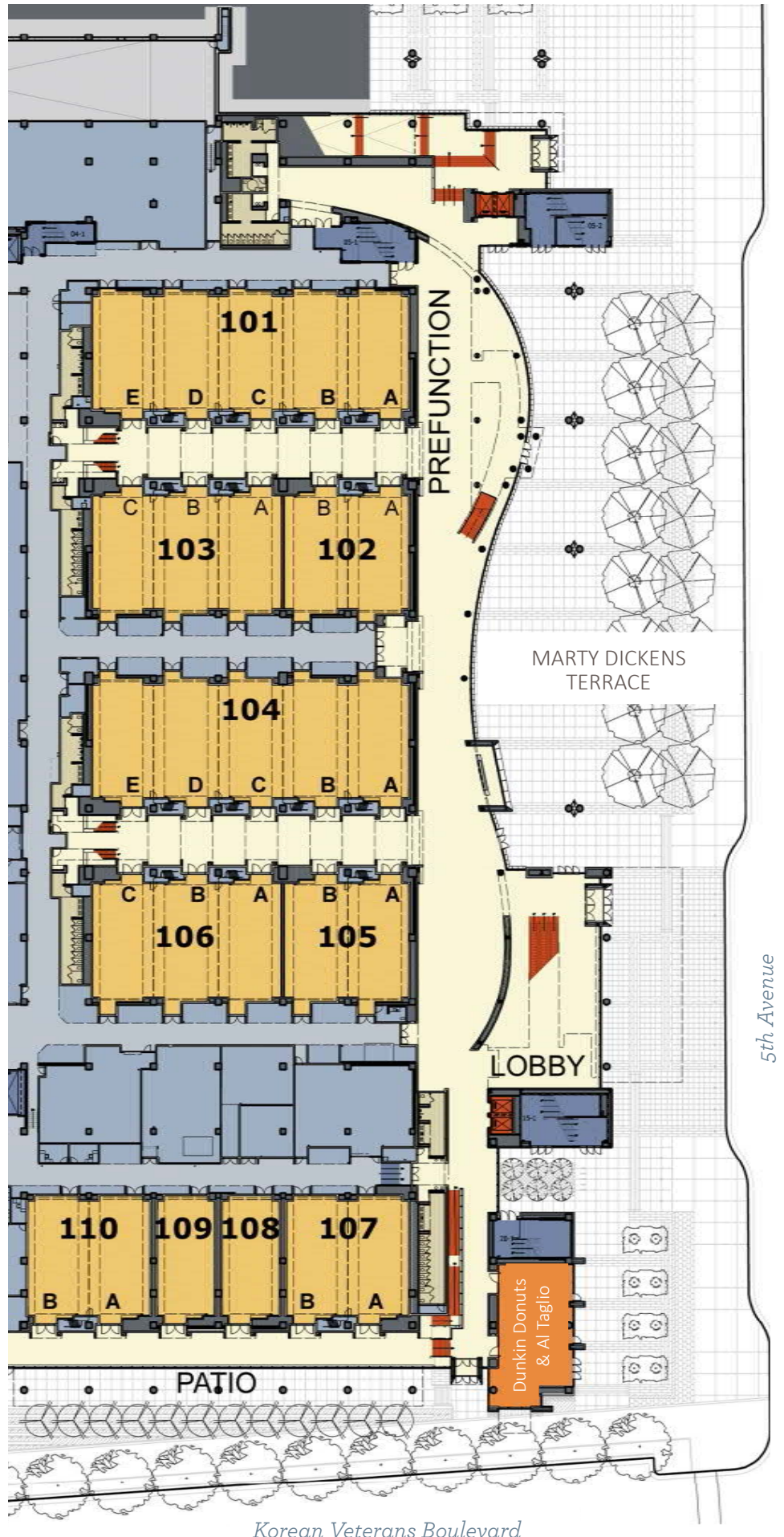
Stage: 78'W x 30'D

Stage Opening: 58'

Ceiling Height: 40'

LEVEL 1: Meeting Rooms

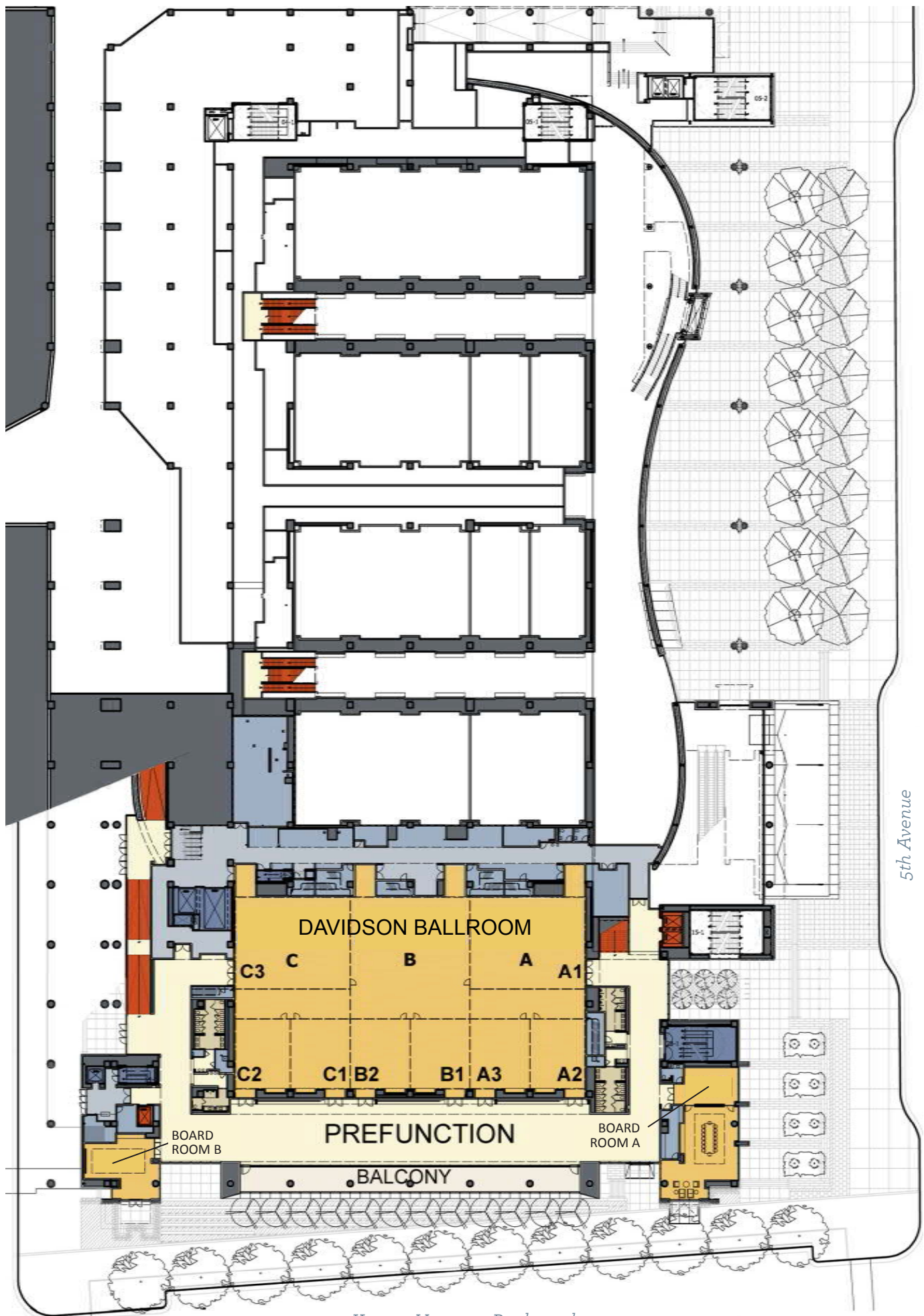
notes:



Korean Veterans Boulevard

<i>MEETING ROOMS</i>	<i>TOTAL SQ. FT.</i>	<i>THEATER</i>	<i>CLASSROOM 18" x 96" tables</i>	<i>BANQUET 66" rounds</i>	<i>CEILING HEIGHT FOOTAGE</i>	<i>DIMENSIONS</i>
101A	1550	182	108	120	18'	28'W x 52'D
101 A-B	3200	448	180	250	18'	28'W x 52'D
101 A-C	4850	582	252	390	18'	88'W x 52'D
101 A-D	6500	829	344	520	18'	118'W x 52'D
101 B	1650	182	108	120	18'	30'W x 52'D
101 B-C	3300	450	180	250	18'	60'W x 52'D
101 B-D	4950	582	252	400	18'	90'W x 52'D
101 B-E	6500	829	344	530	18'	118'W x 52'D
101 C	1650	182	108	120	18'	30'W x 52'D
101 C-D	3300	476	180	250	18'	60'W x 52'D
101 C-E	4850	624	252	400	18'	88'W x 52'D
101 D	1650	182	108	120	18'	30'W x 52'D
101 D-E	3200	442	180	250	18'	58'W x 52'D
101 E	1550	182	108	120	18'	28'W x 52'D
101 (A-E)	8050	988	480	680	18'	146'W x 52'D
102 A	1600	196	108	120	18'	28'W x 52'D
102 B	1650	196	108	120	18'	29'W x 52'D
102 (A-B)	3250	396	180	290	18'	57'W x 52'D
103 A	1650	182	108	120	18'	29'W x 52'D
103 B	1700	196	108	120	18'	30'W x 52'D
103 C	1600	182	108	120	18'	28'W x 52'D
103 (A-C)	4950	582	180	400	18'	87'W x 52'D
104 A	1600	182	108	120	18'	28'W x 52'D
104 B	1700	182	108	120	18'	30'W x 52'D
104 C	1700	182	108	120	18'	30'W x 52'D
104 D	1700	182	108	120	18'	30'W x 52'D
104 E	1600	182	108	120	18'	28'W x 52'D
104 (A-E)	8300	1066	600	680	18'	146'W x 52'D
105 A	1600	182	108	100	18'	28'W x 52'D
105 B	1700	182	108	100	18'	29'W x 52'D
105 (A-B)	3300	396	180	270	18'	57'W x 52'D
106 A	1700	196	108	120	18'	30'W x 52'D
106 B	1700	196	108	120	18'	30'W x 52'D
106 C	1600	182	108	120	18'	28'W x 52'D
106 (A-C)	5000	582	252	400	18'	87'W x 52'D
107 A	1550	182	108	100	15'	28'W x 52'D
107 B	1550	182	108	100	15'	28'W x 52'D
107 (A-B)	3100	396	180	250	15'	56'W x 52'D
108	1400	182	64	100	15'	26'W x 52'D
109	1400	182	64	100	15'	26'W x 52'D
110 A	1550	196	108	100	15'	28'W x 52'D
110 B	1550	196	108	100	15'	28'W x 52'D
110 (A-B)	3100	396	180	250	15'	56'W x 52'D
L1 TOTALS	41,850	5166	2360	3420		
PREFUNCTION	24,300					
MARTY DICKENS TERRACE	19,000					

LEVEL 1M: Davidson Ballroom

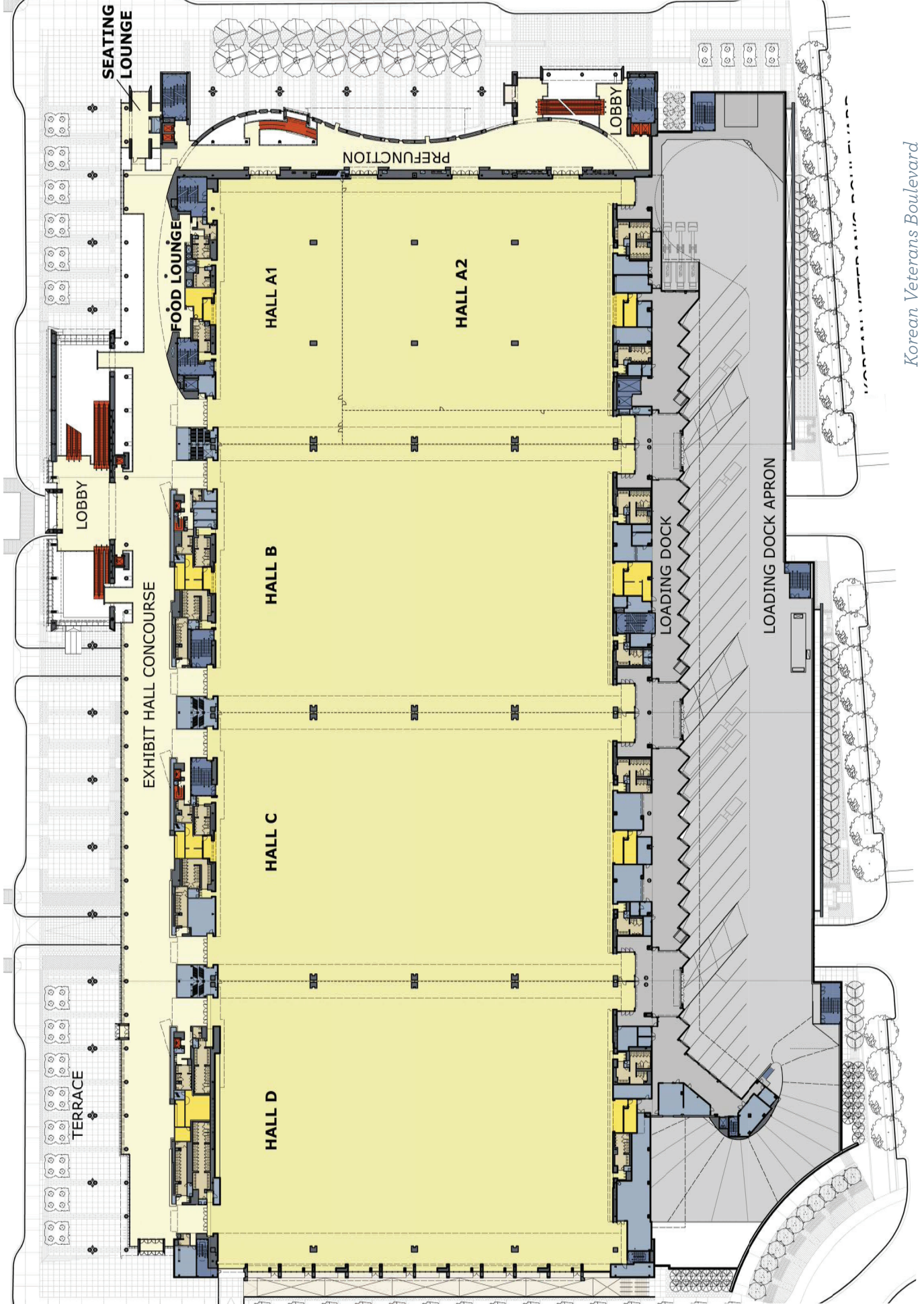


Korean Veterans Boulevard

5th Avenue

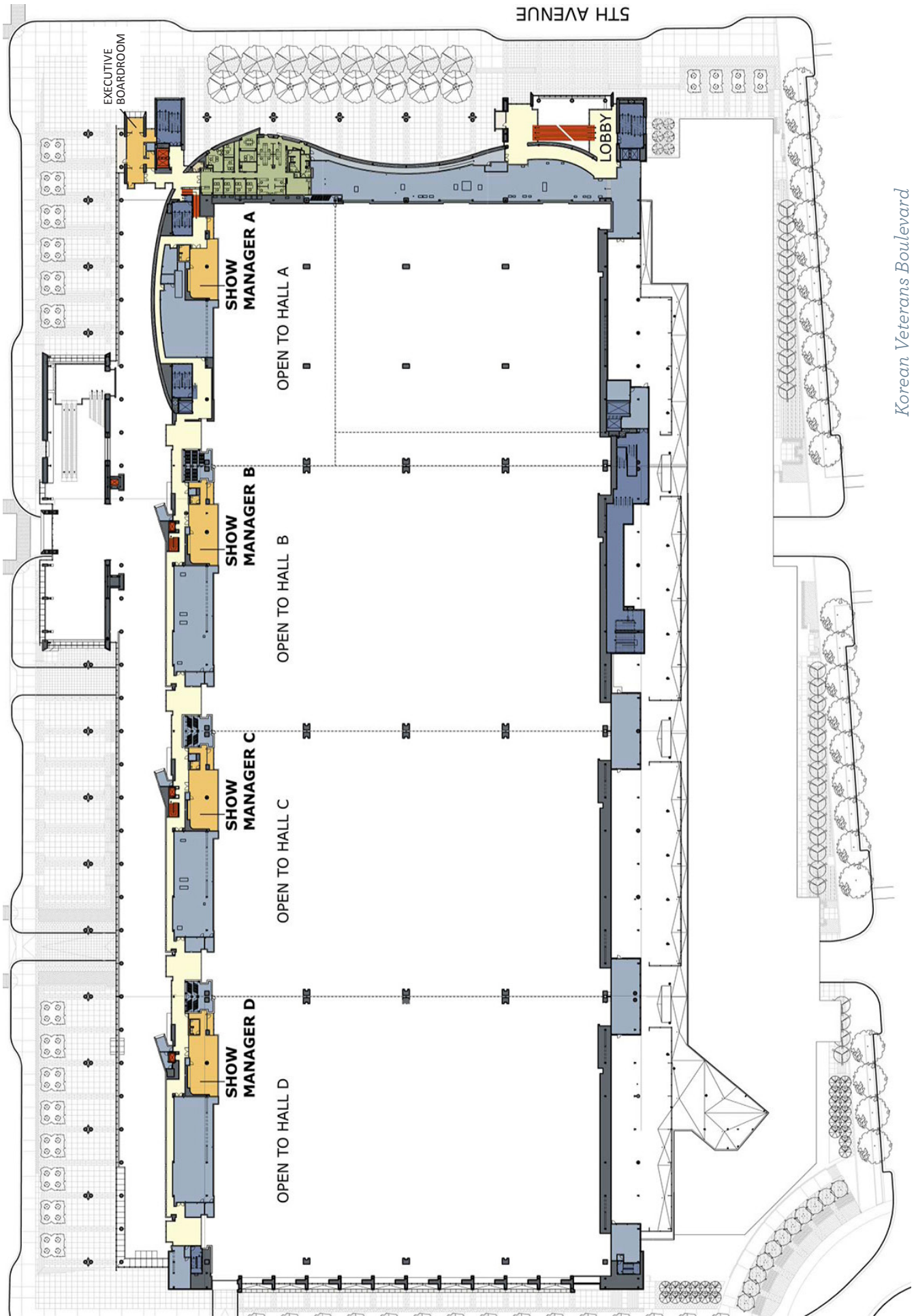
<i>MEETING ROOMS</i>	<i>TOTAL SQ. FT.</i>	<i>THEATER</i>	<i>CLASSROOM 18" x 96" tables</i>	<i>BANQUET 66" rounds</i>	<i>CEILING HEIGHT FOOTAGE</i>	<i>DIMENSIONS</i>
201 A	1600	182	108	140	16'	28'W x 52'D
201 B	1650	182	108	140	16'	28'W x 52'D
201 A- B	3250	396	180	250	16'	57'W x 52'D
202 A	1650	182	108	140	16'	29'W x 52'D
202 B	1650	182	108	140	16'	30'W x 52'D
202 C	1600	182	108	140	16'	28'W x 52'D
202 A- C	4900	582	252	400	16'	88'W x 52'D
203 A	650	60	27	40	16'	24'W x 25'D
203 B	700	72	36	40	16'	24'W x 27'D
203 A- B	1350	156	64	100	16'	24'W x 52'D
204	1650	182	108	120	16'	29'W x 52'D
205 A	1700	182	108	140	16'	29'W x 52'D
205 B	1700	182	108	140	16'	30'W x 52'D
205 C	1600	182	108	140	16'	28'W x 52'D
205 A- C	5000	582	252	400	16'	88'W x 52'D
206 A	700	84	36	40	16'	24'W x 26'D
206 B	650	77	27	40	16'	24'W x 25'D
206 A- B	1350	169	64	100	16'	24'W x 51'D
207 A	1650	182	108	140	16'	30'W x 51'D
207 B	1700	182	108	140	16'	30'W x 51'D
207 C	1600	182	108	140	16'	30'W x 51'D
207 D	1600	182	108	140	16'	28'W x 51'D
207 A- D	6650	829	344	440	16'	118'W x 51'D
208 A	1550	182	108	100	16'	28'W x 52'D
208 B	1650	182	108	140	16'	29'W x 52'D
208 A- B	3200	396	180	150	16'	57'W x 52'D
209 A	1650	182	140	140	16'	29'W x 52'D
209 B	1650	182	140	140	16'	30'W x 52'D
209 C	1550	182	100	100	16'	28'W x 52'D
209 A- C	4850	582	252	400	16'	88'W x 52'D
210	1250	144	56	90	16'	46'W x 25'D
211	1100	110	48	60	16'	42'W x 23'D
212	1250	142	64	70	16'	43'W x 26'D
213	800	75	36	60	16'	29'W x 25'D
214	1600	189	72	100	16'	57'W x 28'D
TOTALS	38,200	4568	1972	2840		
PREFUNCTION	29,350					
REGISTRATION	3000					

LEVEL 3: Exhibit Hall



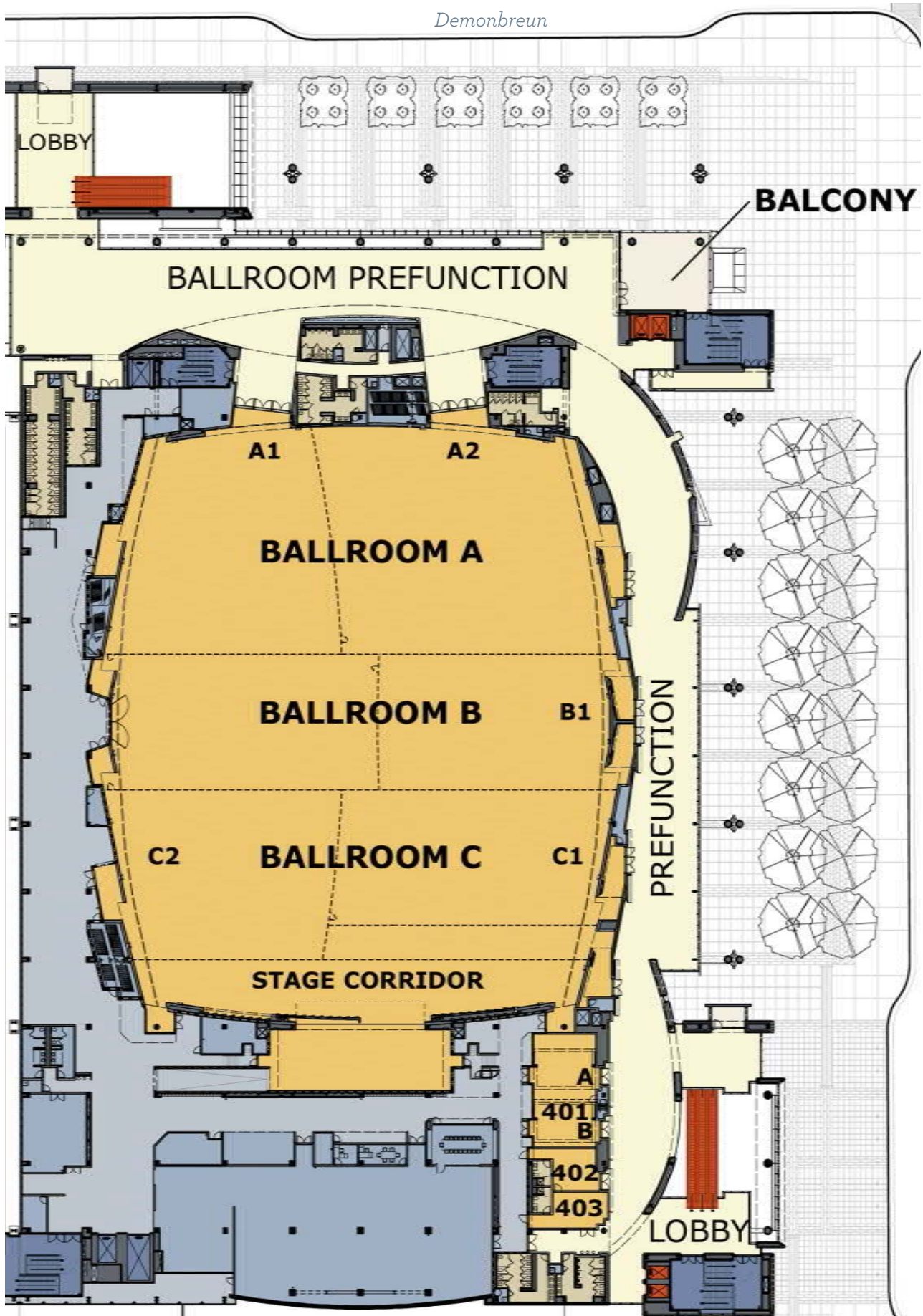
Korean Veterans Boulevard

LEVEL 3M: Show Managers



LEVEL 4: Karl F. Dean Grand Ballroom

Demonbreun



BALLROOMS	TOTAL SQ. FT.	THEATER	CLASSROOM 18" x 96" tables	BANQUET 66" rounds	CEILING HEIGHT FOOTAGE	DIMENSIONS
BALLROOM A	21,600	2773	1352	1420	18'	220'W x 160'D
SALON A1	8350	1120	472	570	18'	105'W x 100'D
SALON A2	11,100	1400	588	690	18'	100'W x 118'D
BALLROOM B	13,900	2016	848	950	18'	60'W x 215'D
SALON B1	5900	914	376	400	18'	60'W x 99'D
BALLROOM C	16,850	2310	1108	1290	18'	75'W x 211'D
SALON C1	6750	940	444	480	18'	60'W x 116'D
SALON C2	6700	940	444	480	18'	60'W x 100'D
BALLROOM A & B	35,500	4700	2104	2350	18'	220'W x 160'D
BALLROOM B & C	30,750	4223	2028	2140	18'	135'W x 215'D
TOTAL	17,900	7453	3368	4030	20'	175'W x 96'D
401 A	700	70	36	40	16'	
401 B	500	50	24	40	16'	
401 A- B	1200	140	60	80	16'	
402	400	38	16	20	16'	
403	400	22	8	20	16'	
PREFUNCTION	22,400					
BALCONY	1300					
STAGE	5150				30' - 40'	195'W x 28'D
STAGE CORRIDOR	5150				30' - 40'	195'W x 28'D
STAGE OPENING						58'

UTILITY FLOOR BOXES:

- Boxes on 30' centers
- Equipped with CAT6 data outlets, telephone service, multi-mode fiber
- POWER: (1) 120v 20a dedicated + (1) 208/120v 3 phase 30a 5 wire

BALLROOM FLOORS LIVE LOAD:

150 lbs/sq. ft.

RIGGING:

1,000 lbs. or 2,500 lbs. per rig point depends on location

FREIGHT ELEVATOR SIZE:

Elevator 04 - 1 & 14 - 1

Dimension: 7'8"W x 11'8"D x 10'H
Weight Load: 6,000 lbs.

Elevator 14 - 2

Dimension: 10'W x 19'8"D x 9'8"H
Weight Load: 12,000 lbs.



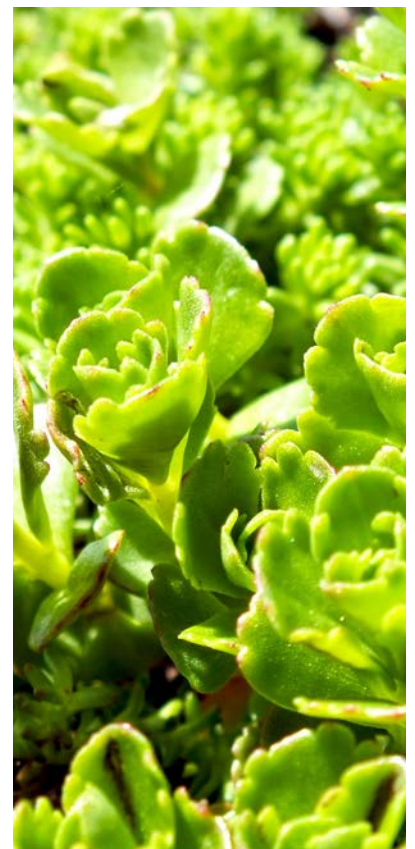
notes:

Sustainability

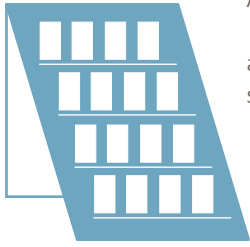


The Music City Center makes it a part of our mission to focus on environmental sustainability and the Music City Center is LEED® Gold certified for New Construction by the U.S. Green Building Council and verified by the Green Building Certification Institute. The LEED (Leadership in Energy and Environmental Design) green building rating system is a globally recognized symbol of excellence in green buildings. LEED certification identifies Music City Center as a showcase example of sustainable design and demonstrates leadership in transforming the building industry. Features key to the Music City Center's LEED Gold certification include a green roof, a rainwater harvest system and extensive LED lighting with specialized controls. The four-acre green roof, currently the largest in the Southeast, is composed of 14 different types of vegetation which slow rainwater runoff and direct it to a

360,000 gallon collection tank. Harvested rainwater is then used to flush over 500 toilets/urinals and irrigate outdoor landscaping. All toilets, urinals and faucets in the Music City Center utilize low-flow technology and are part of the water management plan that reduces the facility's overall water usage by 40 percent. The roof helps to reduce energy usage by absorbing heat and acting as an insulator to reduce the amount of energy needed to provide heating and cooling to the facility. As lighting can account for 30 percent of energy used in buildings, the Music City Center uses LED lighting equipped with occupancy sensors, photo sensors and dimmable ballasts to reduce energy use. On average, the building will consume 20 percent less energy than conventionally designed buildings of the same type.



ENERGY



Along with the many energy-saving features of our building the MCC is dedicated to producing and using renewable energy. Our array of 845 solar panels produced

324,026 kWh

saving us **\$25,566.03** in energy costs

*This is enough energy to power over 25 homes for an entire year!

845 solar panels

The MCC has a 211 kWh solar panel system that can be found on the green roof. You can keep up with our solar production every day at

<https://solarems.net/kiosks/182>.

AWARDS & CERTIFICATIONS



AWARDED LEED® GOLD

Awarded LEED® Gold certification for New Construction by the U.S. Green Building Control

GOVERNOR'S ENVIRONMENTAL STEWARDSHIP AWARD

Winner in the Green Building Category



MAYOR'S WORKPLACE CHALLENGE

Achieved Gold Level in the Green Category for the Mayor's Workplace Challenge



WATER

Due to our rain water reuse program our facility is able to reduce water usage by 40% saving **3,028,652** gallons of water

This is enough water to fill an Olympic sized swimming pool **4.5** times



The MCC is dedicated to reducing its environmental impact by implementing extensive recycling programs to avoid sending recyclable materials to the landfill.



SUSTAINABLE CATERING

Our award winning Executive Chef Max Knoepfel is committed to cooking with the best fresh, nutritional and sustainable ingredients that Middle Tennessee has to offer.

At the Music City Center, we are committed to supporting and encouraging sustainable practices and this commitment underlies all our day-to-day operations. We donate all of our leftover food to the Nashville Rescue Mission, Second Harvest of Middle Tennessee or Walden's Pond.

REAL® VERIFICATION

1st convention center to be REAL certified by the US Healthful Food Council



Food & Beverage





Authentic, fresh and memorable are words often used to describe cuisine prepared by our chefs who respect and convey tantalizing flavors, textures and visual appeal in the menus they craft for our guests. Here at the Music City Center, food and beverage celebrates the culture, warmth and vibrancy of our truly one-of-a-kind city. Our menu is a culinary expression of this celebration, highlighting local products and recipes as often as possible. We are dedicated to the simple idea of making sure every guest

gets an honest and authentic taste of Nashville. Whether food and beverage is selected from our extensive menu, custom created just for you, or provided from our retail carts, we take personal and professional pride in delivering our promise of extraordinary experiences. Our culinary team, offers catered business and social meals, receptions, exhibitor/booth catering and retail cart concessions. For more information, please contact Catering Sales at 615-401-1360.





MUSIC CITY CENTER
201 5th Avenue South · Nashville, Tennessee 37203
nashvillemusiccitycenter.com · 615.401.1400